

Our finishing department



Our finishing department



is operated by our Finishing department

Rather than trying to achieve an 'OK' finish at home, our professional, in-house service offers beautiful, ready-to-hang, furniture grade finished doors.

We have a dedicated team of skilled finishing craftsmen, managed by our Production Manager Ben, who has over 25 years experience in the industry.



"From our picking and product preparation colleagues, sanding each door by hand, to our professional spray application team, the highest quality, premium finish is achieved on our doors."

Ben Wayman
Production Manager



Our finishing department



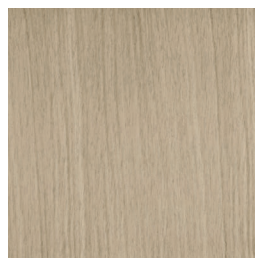
Available on all Unfinished Oak doors



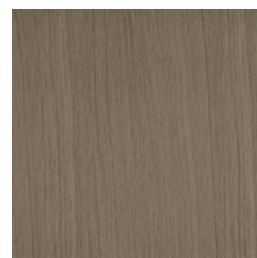
Blanco



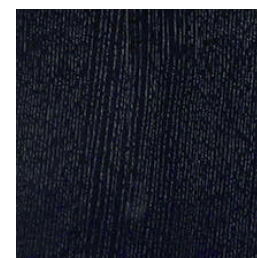
Crema



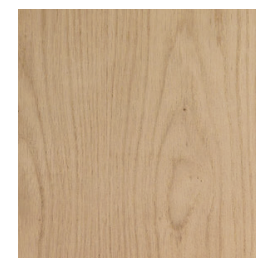
Latte



Cappuccino

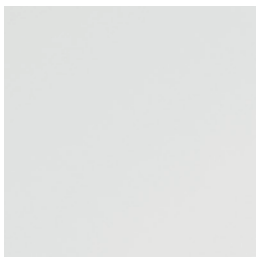


Americano

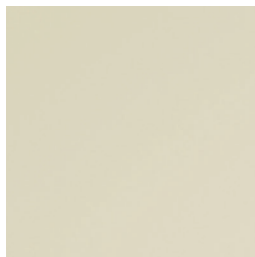


Clear Lacquer

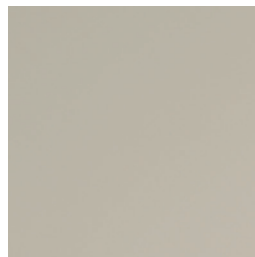
Available on all White Primed doors



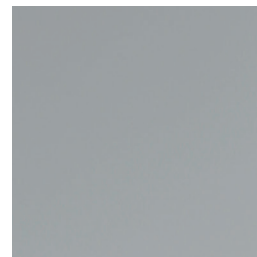
Glacier



Chantilly



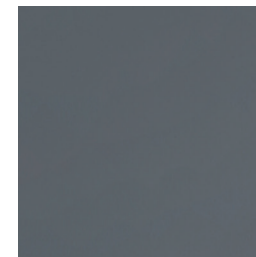
Isabella



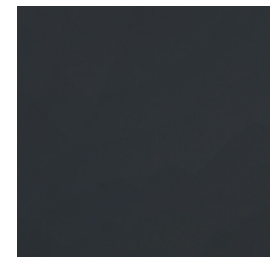
Storm



Slate



Cinder



Cosmos

Our finishing department



The XL difference

- We have a purpose-built finishing workshop, complete with drying oven.
- Most spray facilities don't have an oven and have to 'air-dry' their doors.
- Air-drying doors can cause 'blooming'. This is because when you spray in colder temperatures (10°C and below), moisture is left between the layers of finish and cannot be drawn out. This leaves blotches that can only be removed by going back to the start and prepping the door again.
- Having our own oven allows us to continue applying finishes to our products to the highest standard, regardless of temperature.
- Our drying oven draws out any such moisture before it can 'bloom'.

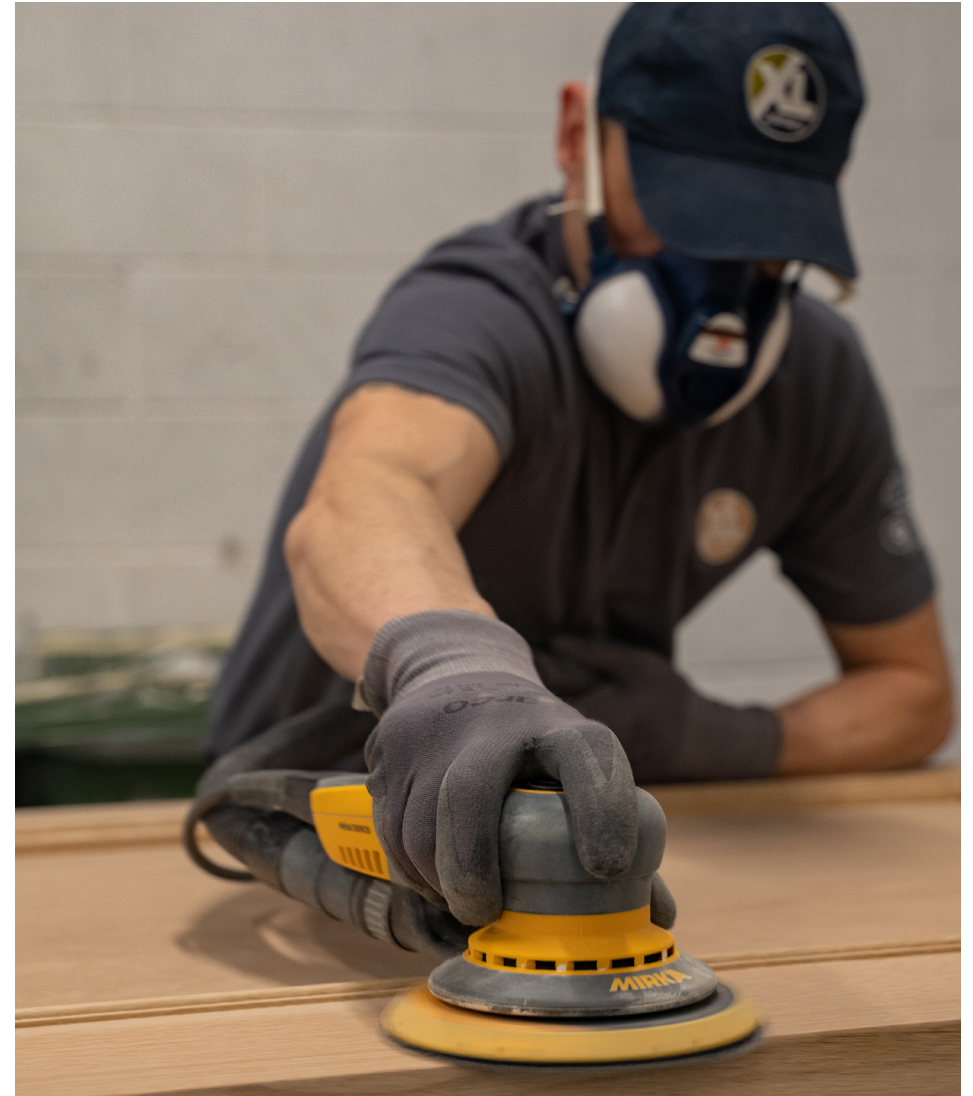


Our finishing department



The Process

- 1) Each door is prepared by hand.
- 2) Three coats of finish are applied to stained doors (base and topcoats), with a light sanding between application.
- 3) Four coats of finish are applied to painted doors (base and topcoats), with a light sanding between application.
- 4) The doors are then placed in the dryer for a final dry, before they are QC'd ready for dispatch.



Our finishing department



BREEAM® Building Research Establishment
Environmental Assessment Method

- Our Stain products now achieve BREEAM refurbishment and new construction legislation.
- This is a sustainability assessment method that is used to masterplan projects, infrastructure and buildings.
- Paint applications will meet BREEAM legislation by the end of 2024.
- Great advantage when tendering for new build, painted or stained doorset projects.



Our finishing department



Our finishing service saves you:

- **Time**
We take care of the labour. No time wasted sanding or priming on site.
- **Money**
We provide the stain and paint so no need to spend money on materials after purchase.
- **Effort**
Just choose a colour that fits your design. No fuss.



Such great value for money and convenience when compared to a professional decorating service.

